



  
**PROMINENCE**  
ESTATES



**RESIDENTIAL**  
PROPERTY EXPERTS

COVENTRY, WARWICKSHIRE  
& LEAMINGTON SPA

**MELVILLE ROAD,**  
CITY CENTRE, COVENTRY, CV1 3AN

**£575 PCM**



MELVILLE ROAD



**PROMINENCE**  
— ESTATES —

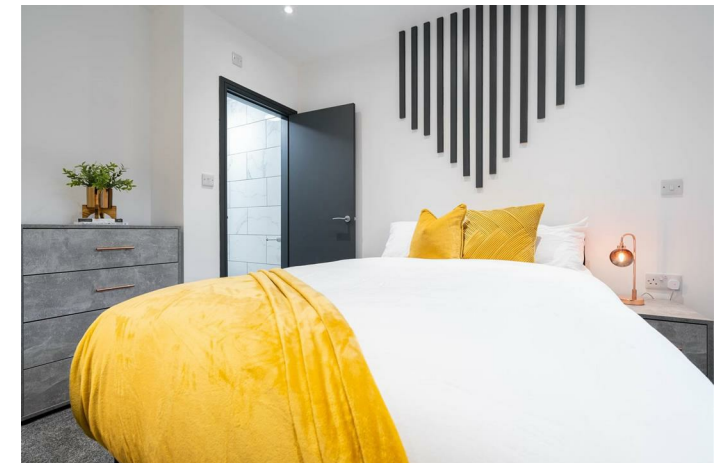
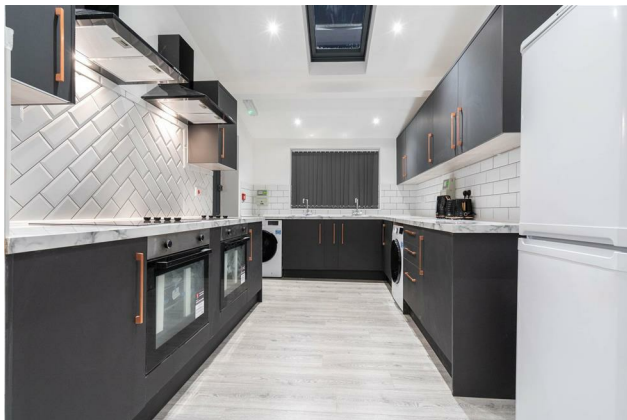
SINGLE OCCUPANCY ONLY Luxurious & Modern City Centre En-Suite Rooms Available - **BILLS INCLUDED**. Located only 2 minutes walk into Coventry city centre and only 5 minutes walk to Coventry Train Station. We have a range of en-suite rooms to choose from that have been renovated throughout to a very high standard. The rooms benefit from new soft touch carpet, modern furniture including bed, wardrobe, chest of drawers and desk. Each room also comes with a modern fitted private en-suite shower room with overhead rainfall shower and a wall mounted TV.

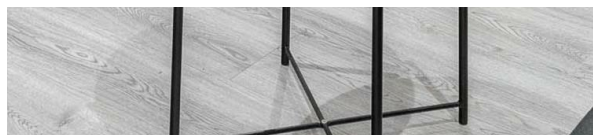
For more information or to book you your viewing, contact our office today.

Luxurious & Modern City Centre Studio Apartments - **BILLS INCLUDED**. Located only 2

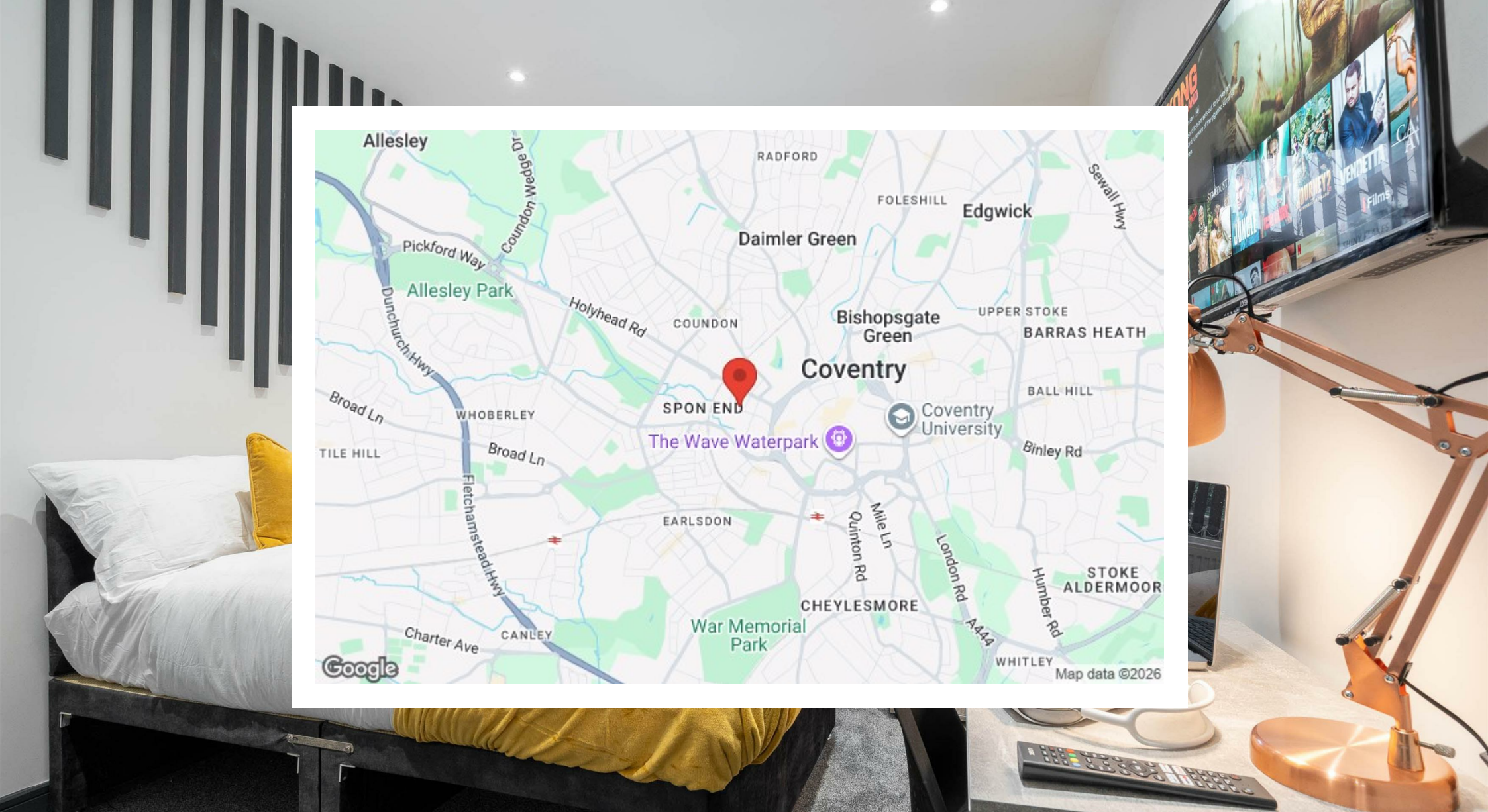
minutes walk into Coventry city centre and only 5 minutes walk to Coventry Train Station. We have a range of large studio apartments to choose from and have been completely renovated throughout to a very high standard. The studios benefit from a modern fitted kitchenette with fridge/freezer, microwave, sink, built in extractor fan and come fully furnished with modern furniture including bed, wardrobe, chest of drawers and desk. Each studio also comes with a modern fitted private en-suite shower room with overhead rainfall shower and a wall mounted TV. The house further benefits from a communal living room and shared kitchen for those wanting to socialise.

For more information or to book you your viewing, contact our office today.









Prominence Estates  
5 Queen Isabels Avenue,  
Cheylesmore,  
Coventry,  
CV3 5GE

02476 309 826  
[lettings@prominenceestates.com](mailto:lettings@prominenceestates.com)  
[www.prominenceestates.com](http://www.prominenceestates.com)

  
**PROMINENCE**  
— ESTATES —